

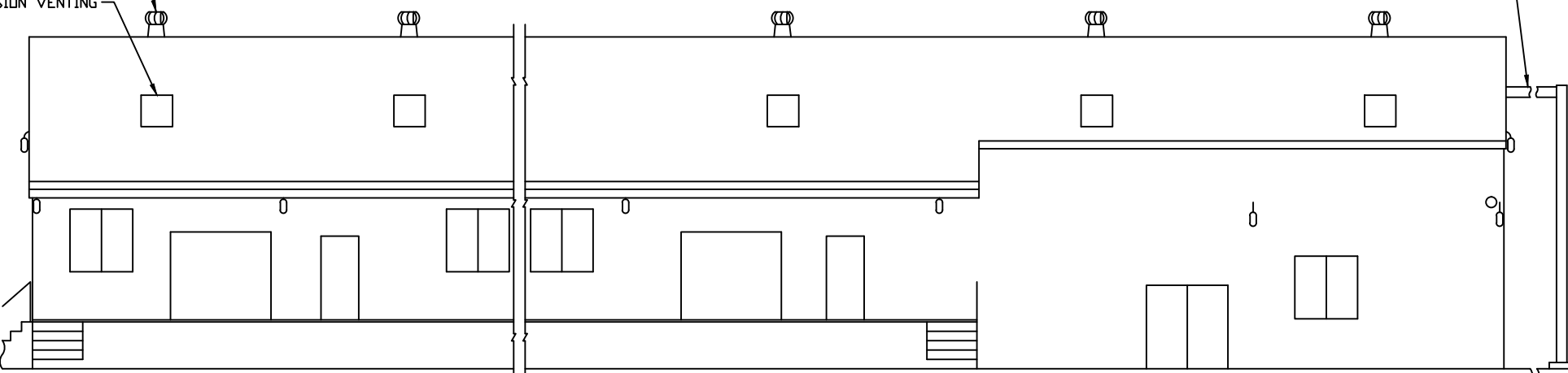
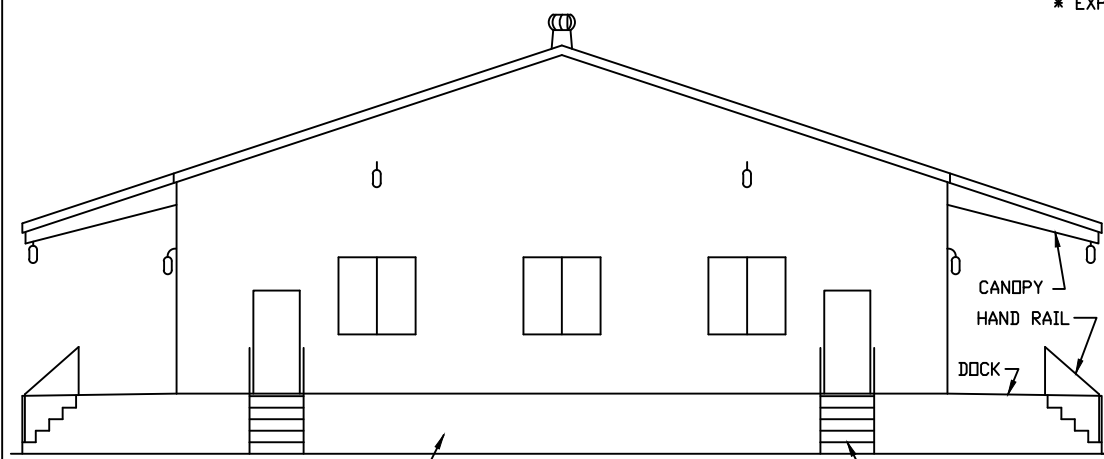


\* AS REQUIRED BY NATIONAL FIRE PROTECTION ASSOCIATION PAMPHLET #51A

MONORAIL SHOWN FOR FLOW BINS. FOR CARBIDE IN DRUMS, MONORAIL ENDS AT WALL.

\* VENTILATION  
\* EXPLOSION VENTING

CANOPY  
HAND RAIL  
DOCK

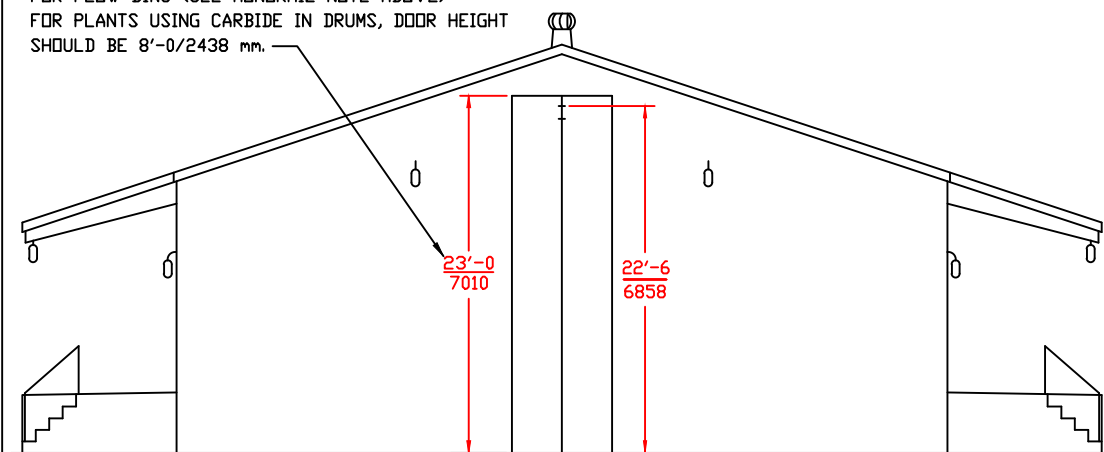


CONCRETE BLOCK FOUNDATION WALL  
END ELEVATION

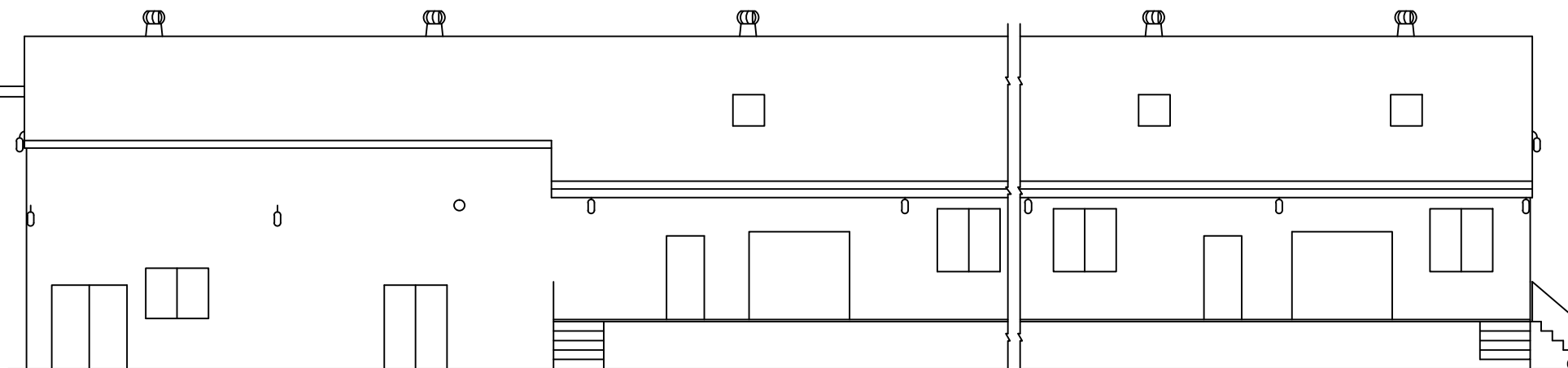
CONCRETE STEPS

SIDE ELEVATION (BACK)

FOR FLOW BINS (SEE MONORAIL NOTE ABOVE)  
FOR PLANTS USING CARBIDE IN DRUMS, DOOR HEIGHT SHOULD BE 8'-0/2438 mm.



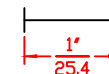
END ELEVATION



SIDE ELEVATION (FRONT)

ALL DIMENSIONS IN FEET-INCHES  $\frac{ft-in}{mm}$   
OVER MILLIMETERS.  
DRAWING MADE TO U.S. STANDARD DIMENSIONS  
AND CONVERTED TO NEAREST MILLIMETER.

FOR REPRODUCTIONS OF THIS DRAWING,  
USE SCALE BELOW AS REFERENCE.



SHEET 2 OF 12  
EXTERIOR ELEVATION

COMPANY PROPRIETARY  
REPRODUCTION OR DISCLOSURE IN ANY WAY IS PROHIBITED WITHOUT THE  
EXPRESS WRITTEN PERMISSION OF REXARC INTERNATIONAL, INC.

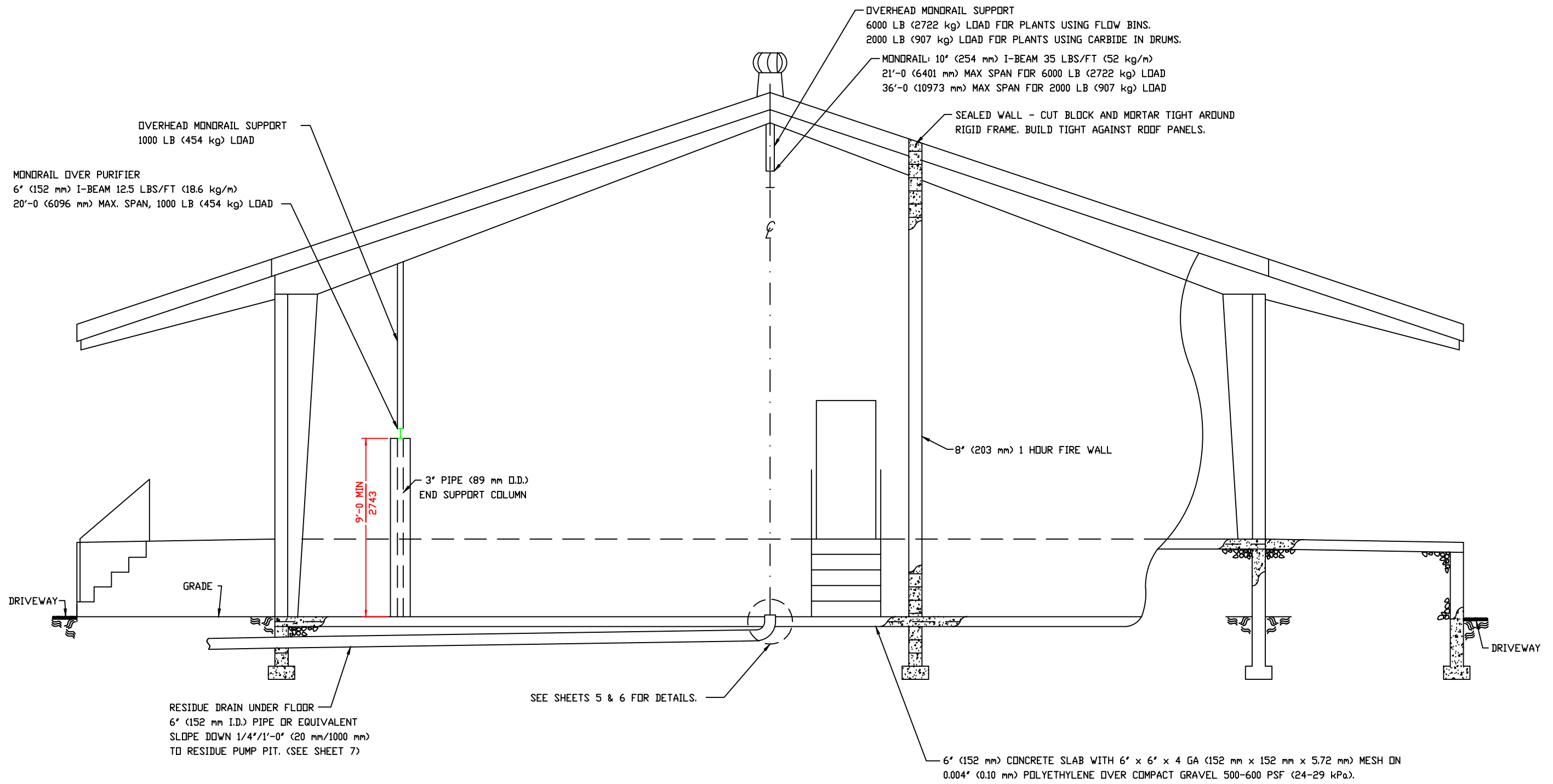
ACETYLENE COMPRESSING PLANT  
MODEL 36 SKID MOUNTED

**Rexarc**  
INTERNATIONAL, INC.

WEST ALEXANDRIA, OHIO, U.S.A.  
DRAWN BY FAA APPROVED BY  
DATE 02/14/14 SCALE 1:75 DWG. NO. 4-03-0252C

TOLERANCE  
UNLESS  
SPECIFIED:  
1/XX ±1/64,  
XX ±.005,  
XX ±.02,  
L S ±1/2"

B CD# 12997



SHEET 3 OF 12  
TYPICAL CROSS SECTION

COMPANY PROPRIETARY  
REPRODUCTION OR DISCLOSURE IN ANY WAY IS PROHIBITED WITHOUT THE EXPRESS WRITTEN PERMISSION OF REXARC INTERNATIONAL, INC.

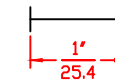
ACETYLENE COMPRESSING PLANT  
MODEL 36 SKID MOUNTED

**Rexarc**  
INTERNATIONAL, INC.

WEST ALEXANDRIA, OHIO, U.S.A.  
DRAWN BY FAA APPROVED BY  
DATE 02/14/14 SCALE 1:32 DWG. NO. 4-03-0252C

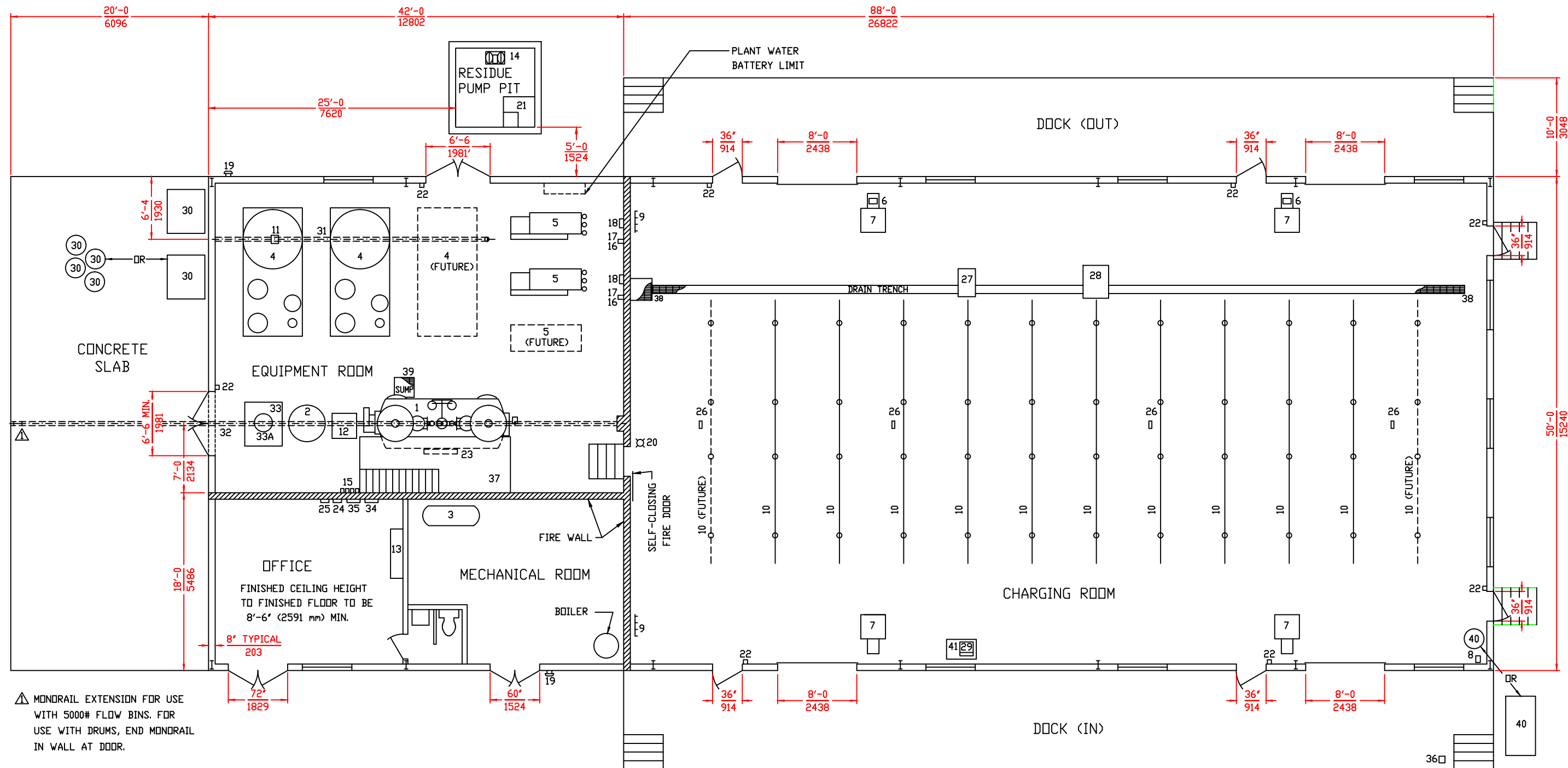
ALL DIMENSIONS IN FEET-INCHES  $\frac{\text{ft-in}}{\text{mm}}$   
OVER MILLIMETERS.  
DRAWING MADE TO U.S. STANDARD DIMENSIONS AND  
CONVERTED TO NEAREST MILLIMETER.  
THESE FOUNDATION PLANS SUBJECT TO LOCAL BUILDING  
CODES WHERE APPLICABLE

FOR REPRODUCTIONS OF THIS DRAWING,  
USE SCALE BELOW AS REFERENCE.



TOLERANCE  
UNLESS  
SPECIFIED:  
1/XX ±1/64,  
XX ±.005,  
XX ±.02,  
L S ±1/2"

B CD# 12997



▲ MONORAIL EXTENSION FOR USE WITH 5000# FLOW BINS. FOR USE WITH DRUMS, END MONORAIL IN WALL AT DOOR.

**DET. EQUIPMENT LIST**

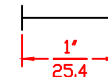
- |                                  |                                                 |
|----------------------------------|-------------------------------------------------|
| 1 ACETYLENE GENERATOR            | 16 ACETYLENE COMPRESSOR STOP SWITCH             |
| 2 CARBIDE FILL CART              | 17 ACETYLENE COMPRESSOR FAST/SLOW SWITCH        |
| 3 AIR COMPRESSOR                 | 18 PRESSURE SWITCH ENCLOSURE                    |
| 4 PROCESS SKID                   | 19 ALARM BELL                                   |
| 5 PUMPING SKID                   | 20 GENERATOR PILOT LIGHT                        |
| 6 ACETYLENE MONITOR (USA PLANTS) | 21 RESIDUE COLLECTOR                            |
| 7 DIGITAL SCALE                  | 22 EMERGENCY STOP PUSHBUTTON                    |
| 8 ACETONE PUMP                   | 23 LUBRICATOR SYSTEM (PART OF GENERATOR)        |
| 9 DRAINBACK MANIFOLD             | 24 LUBRICATOR CONTROL PANEL (PART OF GENERATOR) |
| 10 CHARGING MANIFOLD             | 25 ACETYLENE DETECTOR CONTROL PANEL             |
| 11 CHAIN HOIST                   | 26 ACETYLENE DETECTOR                           |
| 12 AIR HOIST                     | 27 B CYLINDER RACK (USA PLANTS)                 |
| 13 MOTOR CONTROL CENTER          | 28 MC CYLINDER RACK (USA PLANTS)                |
| 14 RESIDUE PUMP                  | 29 BENCH SCALE (USA PLANTS)                     |
| 15 GENERATOR CONTROL SWITCHES    |                                                 |

**ITEMS FURNISHED BY CUSTOMER**

- |                                                |
|------------------------------------------------|
| 30 CARBIDE CONTAINER                           |
| 31 MONORAIL OVER PURIFIER                      |
| 32 MONORAIL OVER GENERATOR                     |
| 33A TILTING TRUNNION (FOR DRUMS)               |
| 34 MAIN SERVICE PANEL                          |
| 35 LIGHTING PANEL                              |
| 36 CYLINDER VISE                               |
| 37 OPERATOR'S PLATFORM                         |
| 38 DRAIN TRENCH & BASIN GRATING (NON-SPARKING) |
| 39 SUMP GRATING (NON-SPARKING)                 |
| 40 ACETONE DRUM OR TANK                        |
| 41 BENCH (USA PLANTS)                          |

ALL DIMENSIONS IN FEET-INCHES  $\frac{ft-in}{mm}$   
 OVER MILLIMETERS.  
 DRAWING MADE TO U.S. STANDARD DIMENSIONS  
 AND CONVERTED TO NEAREST MILLIMETER.

FOR REPRODUCTIONS OF THIS DRAWING,  
 USE SCALE BELOW AS REFERENCE.



SHEET 4 OF 12  
 PLANT EQUIPMENT LAYOUT

COMPANY PROPRIETARY  
 REPRODUCTION OR DISCLOSURE IN ANY WAY IS PROHIBITED WITHOUT THE  
 EXPRESS WRITTEN PERMISSION OF REXARC INTERNATIONAL, INC.

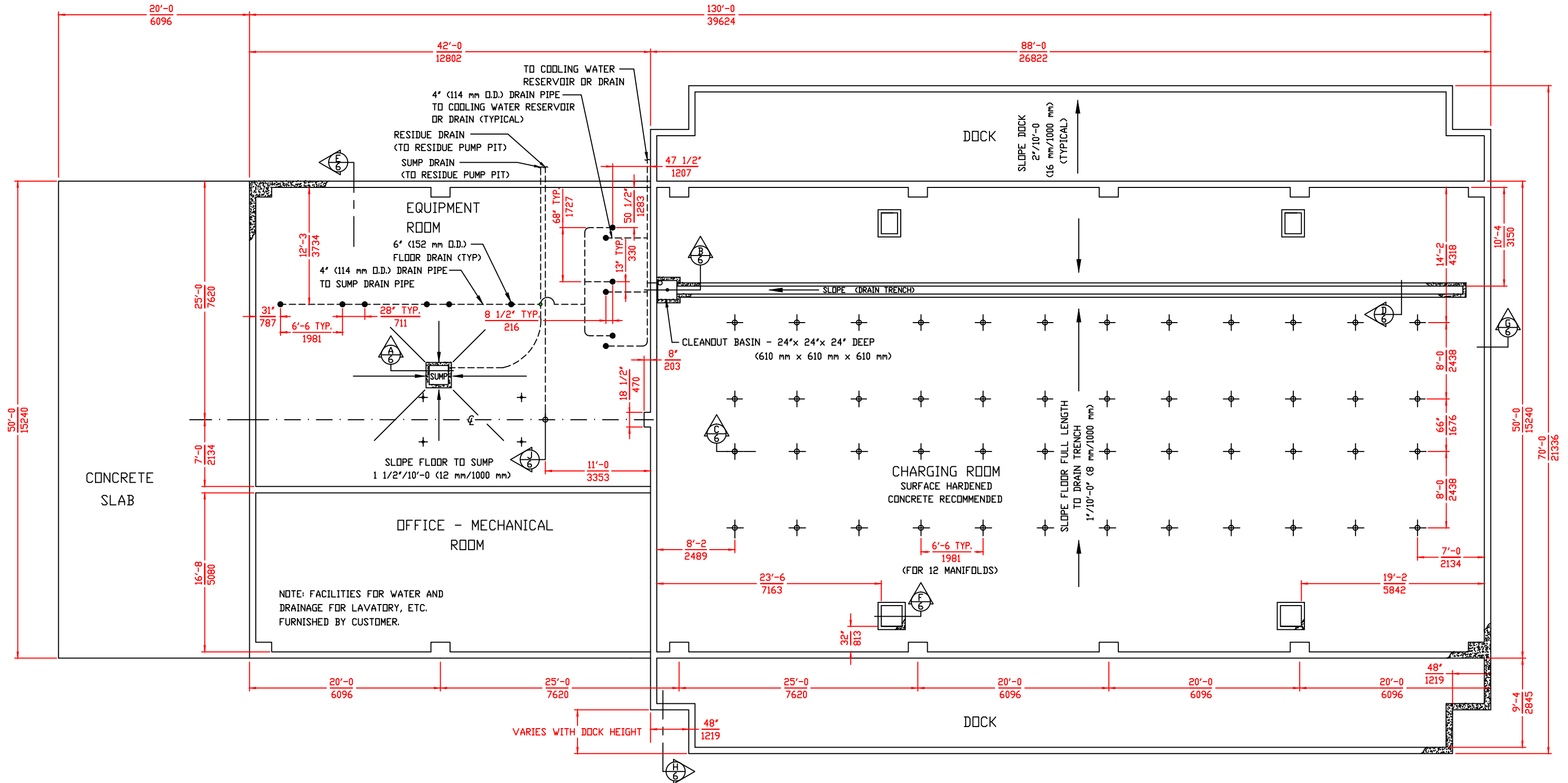
ACETYLENE COMPRESSING PLANT  
 MODEL 36 SKID MOUNTED

**Rexarc**  
 INTERNATIONAL, INC. OHIO, U.S.A.

WEST ALEXANDRIA, LA  
 DRAWN BY FAA  
 DATE 02/14/14 SCALE 1:64 DWG. NO. 4-03-0252C

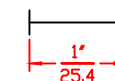
B CD# 12997

TOLERANCE  
 UNLESS  
 SPECIFIED:  
 1/XX ±1/64,  
 .XXX ±0.05,  
 .XX ±0.02,  
 .X ±0.01



ALL DIMENSIONS IN FEET-INCHES  $\frac{\text{ft-in}}{\text{mm}}$   
 OVER MILLIMETERS.  
 DRAWING MADE TO U.S. STANDARD DIMENSIONS  
 AND CONVERTED TO NEAREST MILLIMETER.  
 (EXCEPT MILLIMETERS TO 2 DECIMAL PLACES  
 WHERE APPLICABLE)  
 THESE FOUNDATION PLANS SUBJECT TO LOCAL  
 BUILDING CODES WHERE APPLICABLE.

FOR REPRODUCTIONS OF THIS DRAWING,  
 USE SCALE BELOW AS REFERENCE.



SHEET 5 OF 12  
 FOUNDATION PLAN

COMPANY PROPRIETARY  
 REPRODUCTION OR DISCLOSURE IN ANY WAY IS PROHIBITED WITHOUT THE  
 EXPRESS WRITTEN PERMISSION OF REXARC INTERNATIONAL, INC.  
 ACETYLENE COMPRESSING PLANT  
 MODEL 36 SKID MOUNTED

**Rexarc**  
 INTERNATIONAL, INC.

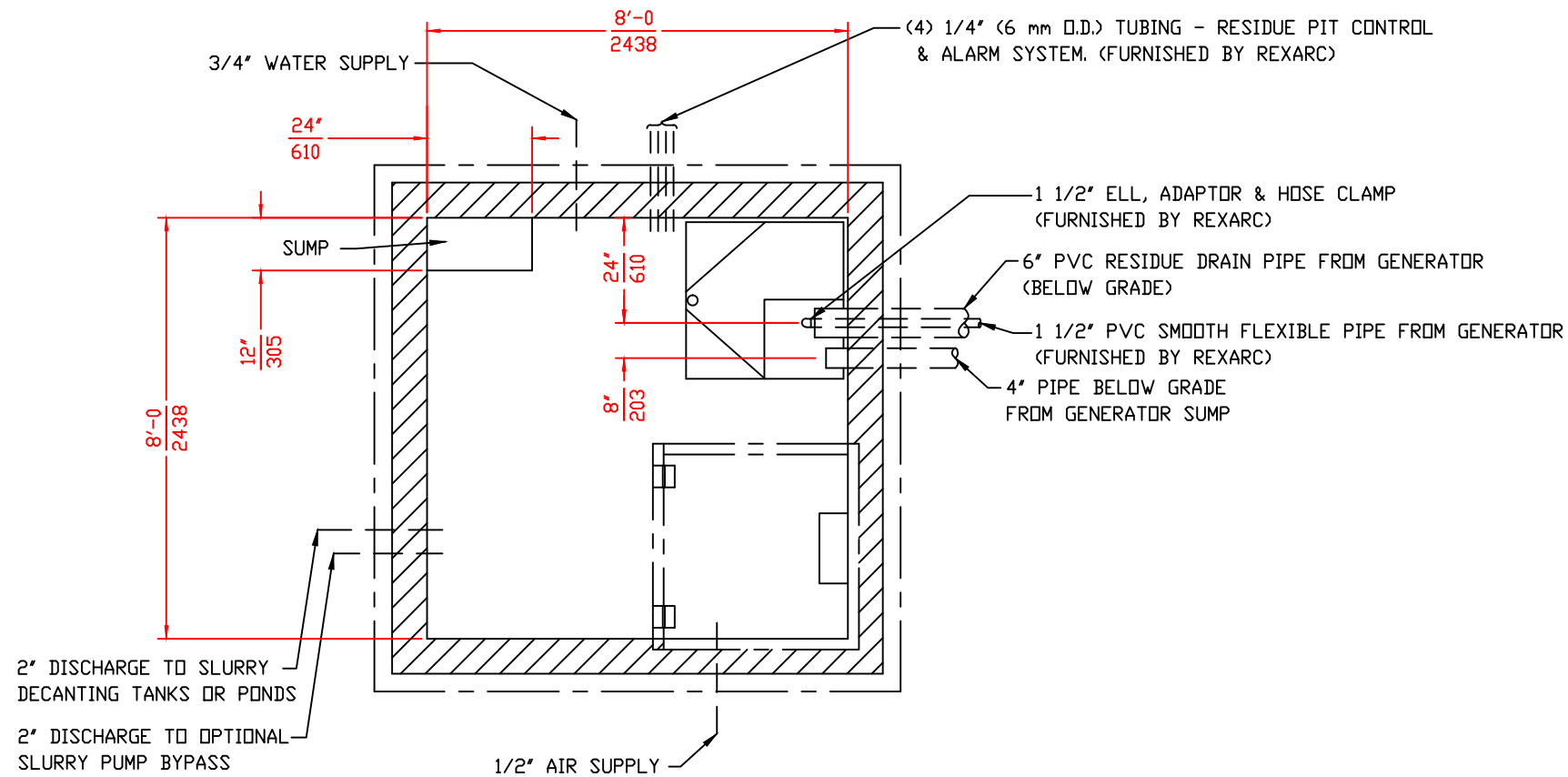
WEST ALEXANDRIA, OHIO, U.S.A.  
 DRAWN BY FAA  
 APPROVED BY

TOLERANCE  
 UNLESS  
 SPECIFIED:  
 1/XX ±1/64,  
 .XX ±.005,  
 .XX ±.02,  
 .L ±.1/2"

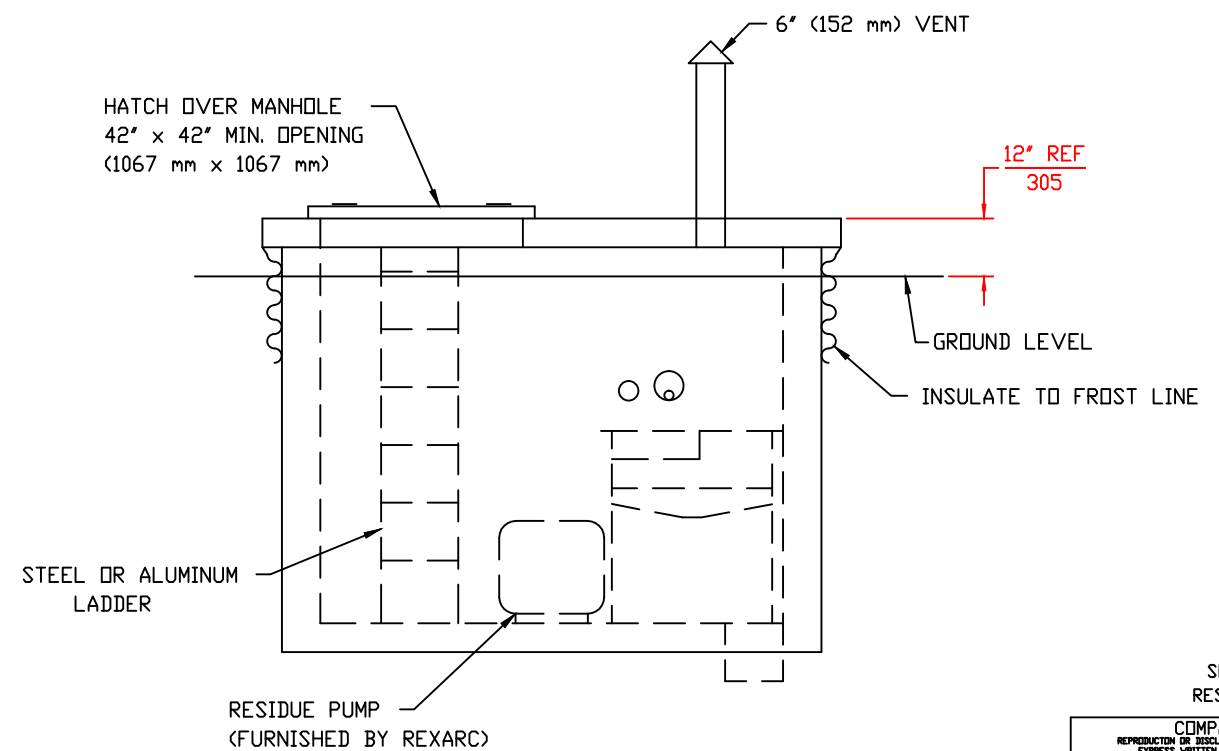
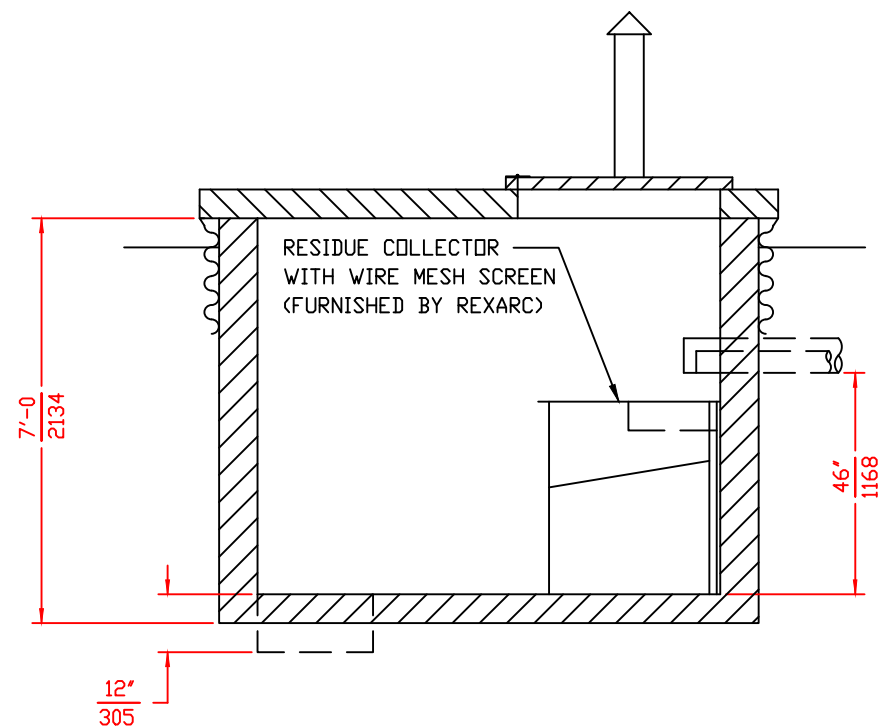
DATE 02/14/14 SCALE 1:64 DWG. NO. 4-03-0252C

B CD# 12997





- 1) SLOPE FLOOR TO SUMP 1"/10'-0" (8 mm/1000 mm)
- 2) ALL DIMENSIONS IN FEET-INCHES  $\frac{\text{ft-in}}{\text{mm}}$  OVER MILLIMETERS.
- 3) DRAWING MADE TO U.S. STANDARD DIMENSIONS AND CONVERTED TO NEAREST MILLIMETER.



SHEET 7 OF 12  
RESIDUE PUMP PIT

COMPANY PROPRIETARY  
REPRODUCTION OR DISCLOSURE IN ANY WAY IS PROHIBITED WITHOUT THE EXPRESS WRITTEN PERMISSION OF REXARC INTERNATIONAL, INC.

ACETYLENE COMPRESSING PLANT  
MODEL 36 SKID MOUNTED

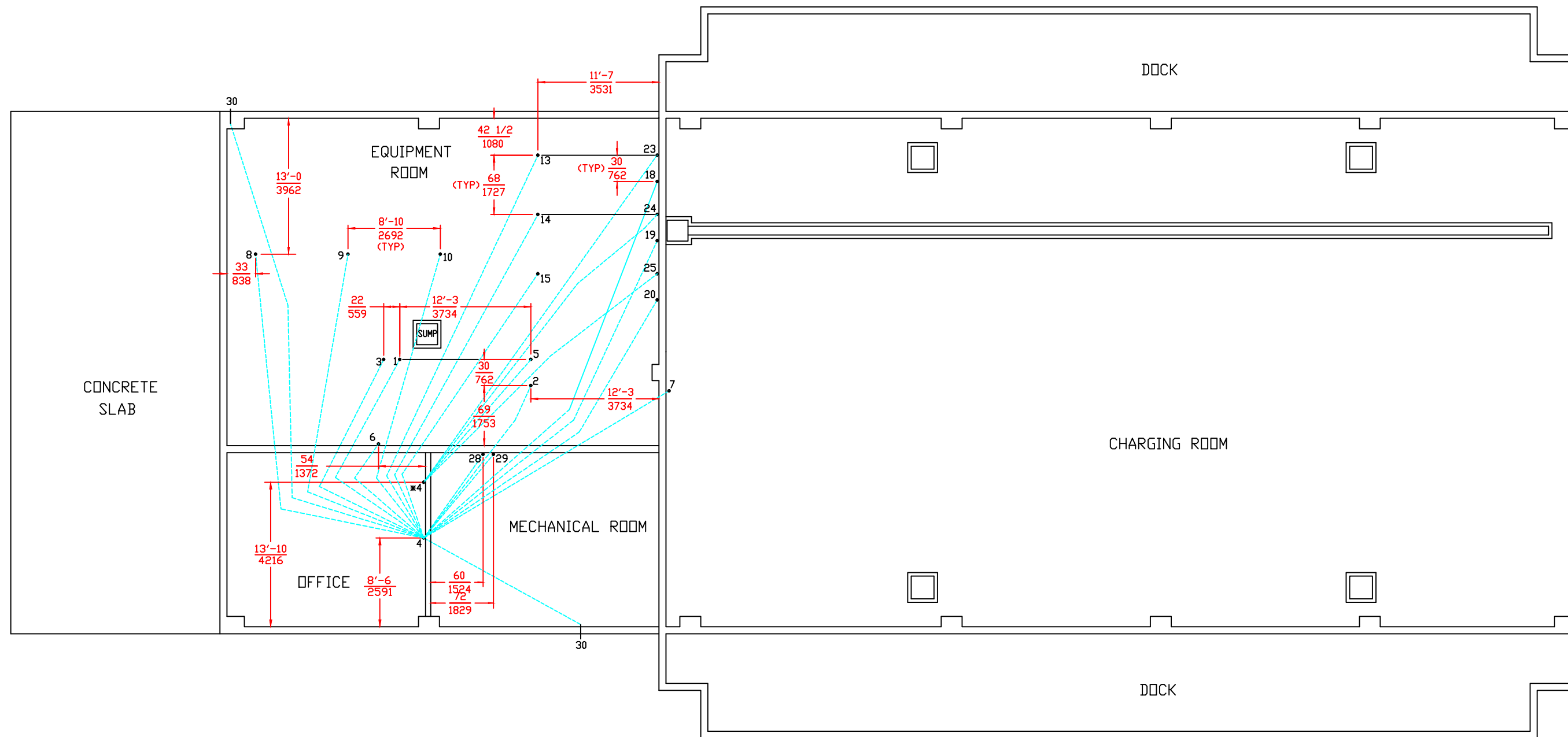
**Rexarc**  
INTERNATIONAL, INC.

WEST ALEXANDRIA, OHIO, U.S.A.  
DRAWN BY FAA APPROVED BY

B CD# 12997

TOLERANCE UNLESS SPECIFIED:  
1/XX ±1/64,  
.XX ±.005,  
.XX ±.02,  
L S ±1/2"

DATE 02/14/14 SCALE - DWG. NO. 4-03-0252C

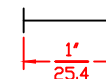


( ) MIN. CONDUIT SIZE  
 [ ] ACTUAL CONDUIT SIZE AT DEVICE  
 \* INTRINSICALLY SAFE WIRING

- |                                                                  |                                                                                 |
|------------------------------------------------------------------|---------------------------------------------------------------------------------|
| 1 GENERATOR HOPPER #1 MOTOR (1/2") [3/4"]                        | 18 ACETYLENE COMPRESSOR #1 (STOP SWITCH & FAST/SLOW SWITCH) (3/4") [3/4"]       |
| 2 GENERATOR HOPPER #2 MOTOR (1/2") [3/4"]                        | 19 ACETYLENE COMPRESSOR #2 (STOP SWITCH & FAST/SLOW SWITCH) (3/4") [3/4"]       |
| 3 GENERATOR AGITATOR MOTOR (1/2") [3/4"]                         | 20 ACETYLENE COMPRESSOR (FUTURE) (STOP SWITCH & FAST/SLOW SWITCH) (3/4") [3/4"] |
| 4 MOTOR CONTROL CENTER                                           | *23 ACETYLENE COMPRESSOR #1 PRESSURE SWITCH ENCLOSURE (1/2") [1/2"]             |
| *5 GENERATOR PRESSURE SWITCH ENCLOSURE (1/2") [1/2"]             | *24 ACETYLENE COMPRESSOR #2 PRESSURE SWITCH ENCLOSURE (1/2") [1/2"]             |
| 6 GENERATOR CONTROL SWITCHES (3/4") [3/4"]                       | *25 ACETYLENE COMPRESSOR (FUTURE) PRESSURE SWITCH ENCLOSURE (1/2") [1/2"]       |
| 7 GENERATOR PILOT LIGHT (1/2") [1/2"]                            | 28 AIR COMPRESSOR MOTOR (1") [1 1/4"]                                           |
| 8 PROCESS SKID #1 (SCRUBBER LEVEL CONTROLS) (1/2") [3/4"]        | 29 AIR COMPRESSOR SELECTOR SWITCH (1/2") [1/2"]                                 |
| 9 PROCESS SKID #2 (SCRUBBER LEVEL CONTROLS) (1/2") [3/4"]        | 30 ALARM BELL (1/2") [3/4"]                                                     |
| 10 PROCESS SKID (FUTURE) (SCRUBBER LEVEL CONTROLS) (1/2") [3/4"] |                                                                                 |
| 13 ACETYLENE COMPRESSOR MOTOR #1 (1 1/4") [1 1/2"]               |                                                                                 |
| 14 ACETYLENE COMPRESSOR MOTOR #2 (1 1/4") [1 1/2"]               |                                                                                 |
| 15 ACETYLENE COMPRESSOR MOTOR (FUTURE) (1 1/4") [1 1/2"]         |                                                                                 |

ALL DIMENSIONS IN FEET-INCHES  $\frac{\text{ft-in}}{\text{mm}}$   
 OVER MILLIMETERS.  
 DRAWING MADE TO U.S. STANDARD DIMENSIONS  
 AND CONVERTED TO NEAREST MILLIMETER.

FOR REPRODUCTIONS OF THIS DRAWING,  
 USE SCALE BELOW AS REFERENCE.



SHEET 8 OF 12  
 ELECTRICAL CONDUIT PLAN

COMPANY PROPRIETARY  
 REPRODUCTION OR DISCLOSURE IN ANY WAY IS PROHIBITED WITHOUT THE  
 EXPRESS WRITTEN PERMISSION OF REXARC INTERNATIONAL, INC.

ACETYLENE COMPRESSING PLANT  
 MODEL 36 SKID MOUNTED

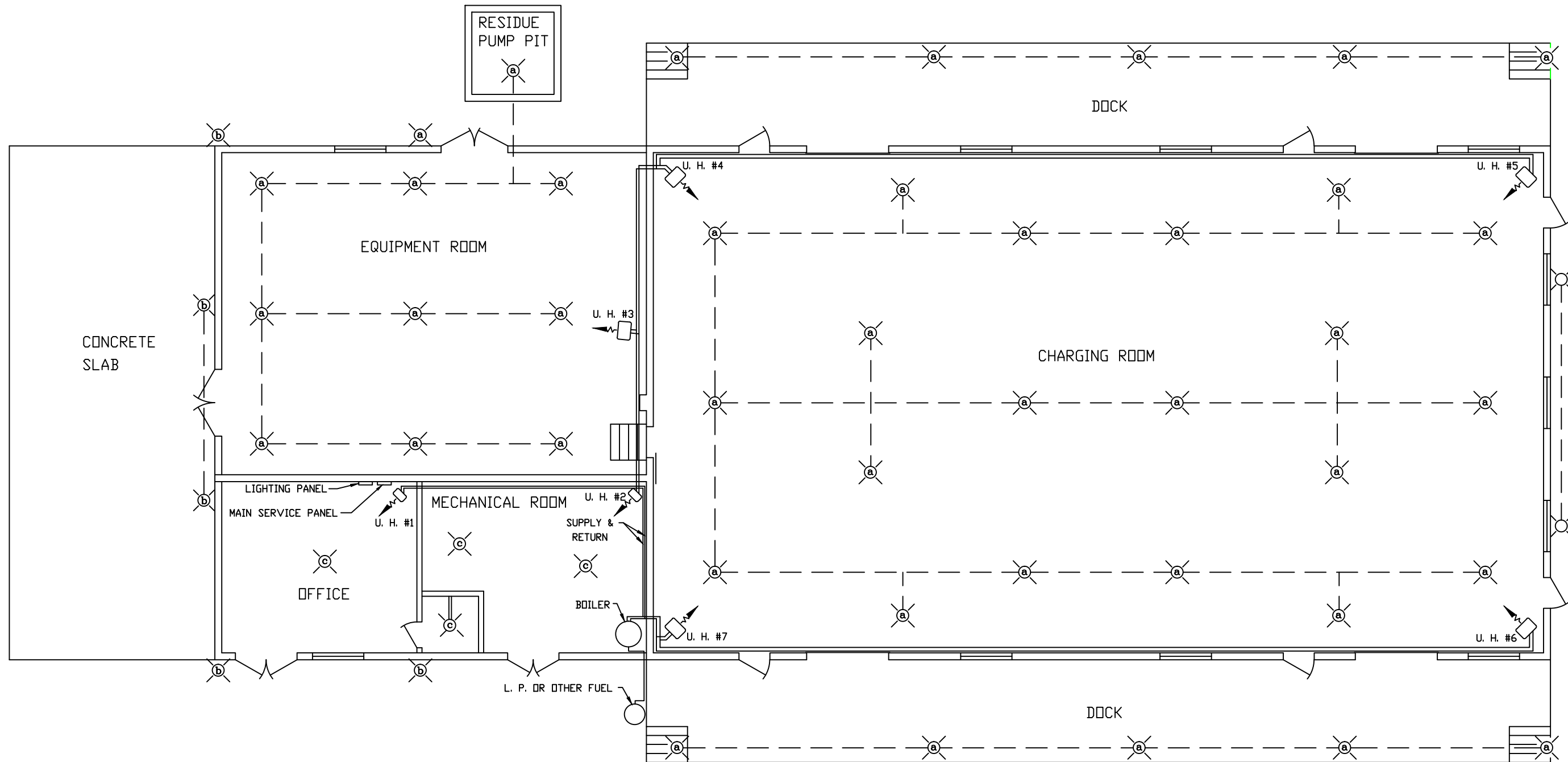
**Rexarc**  
 INTERNATIONAL, INC.

WEST ALEXANDRIA, OHIO, U.S.A.  
 DRAWN BY FAA APPROVED BY  
 DATE 02/14/14 SCALE 1:64 SVG. NO. 4-03-0252C

B CD# 12997

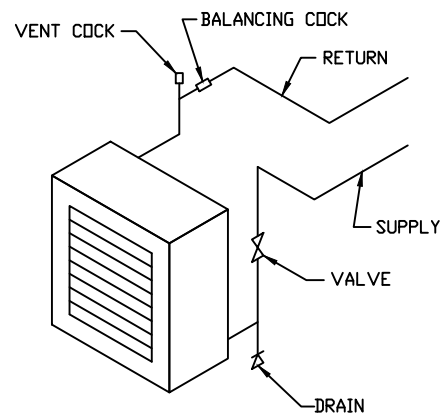
TOLERANCE  
 UNLESS  
 SPECIFIED:  
 1/XX ±1/64,  
 .XXX ±.005,  
 .XX ±.02,  
 .X ±.1/2"





**ELECTRICAL SPECIFICATIONS**

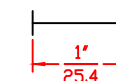
- 1 ALL ELECTRICAL WIRING SHALL BE INSTALLED IN ACCORDANCE WITH NATIONAL FIRE PROTECTION ASSOCIATION PAMPHLET #51A.
- 2 ALL LIGHTS SHALL BE CONTROLLED FROM A PANEL IN THE MECHANICAL ROOM.
- 3 INSTALL SEALING FITTINGS ON ALL CONDUIT LEAVING COMPRESSING PLANT BUILDING.
- 4 FIXTURE (a) CLASS #1 GROUP A (CROUSE HINDS # EVA 2921 PENDANT) LOCATED 10'-0 (3048 mm) ABOVE FINISHED FLOOR EXCEPT AROUND GENERATOR & SCALES. LIGHT FIXTURE ABOVE ALL SCALE PLATFORMS AT 8'-0 (2438 mm) ABOVE FINISHED FLOOR.
- 5 FIXTURE (b) (CROUSE HINDS # VDA 23 GP) OR EQUIVALENT.
- 6 FIXTURE (c) (CROUSE HINDS - PORCELAIN LAMP HOLDER) OR EQUIVALENT.
- 7 CONDUIT MAY BE INSTALLED IN FLOOR SLABS.
- 8 ALL ITEMS ABOVE FURNISHED & INSTALLED BY ELECTRICAL CONTRACTOR.



(U. H.) UNIT HEATER PIPING

- A COPPER ALLOYS CONTAINING MORE THAN 65% COPPER ARE NOT TO BE USED WHERE THEY MAY BE EXPOSED TO ACETYLENE.
- B UNIT HEATERS U. H. #3 THROUGH U. H. #7 ARE TO BE CLASS 1 GROUP D.
- C HEATING SYSTEM FURNISHED & INSTALLED BY HEATING CONTRACTOR.

FOR REPRODUCTIONS OF THIS DRAWING, USE SCALE BELOW AS REFERENCE.



SHEET 9 OF 12  
HEATING AND LIGHTING PLAN

COMPANY PROPRIETARY  
REPRODUCTION OR DISCLOSURE IN ANY WAY IS PROHIBITED WITHOUT THE EXPRESS WRITTEN PERMISSION OF REXARC INTERNATIONAL, INC.

ACETYLENE COMPRESSING PLANT  
MODEL 36 SKID MOUNTED

**Rexarc**  
INTERNATIONAL, INC.

WEST ALEXANDRIA, OHIO, U.S.A.  
DRAWN BY FAA APPROVED BY  
DATE 02/14/14 SCALE 1/64 SVG. NO. 4-03-0252C

TOLERANCE UNLESS SPECIFIED:  
1/XX ±1/64,  
.XXX ±.005,  
.XX ±.02,  
L S ±1/2"

B CD# 12997